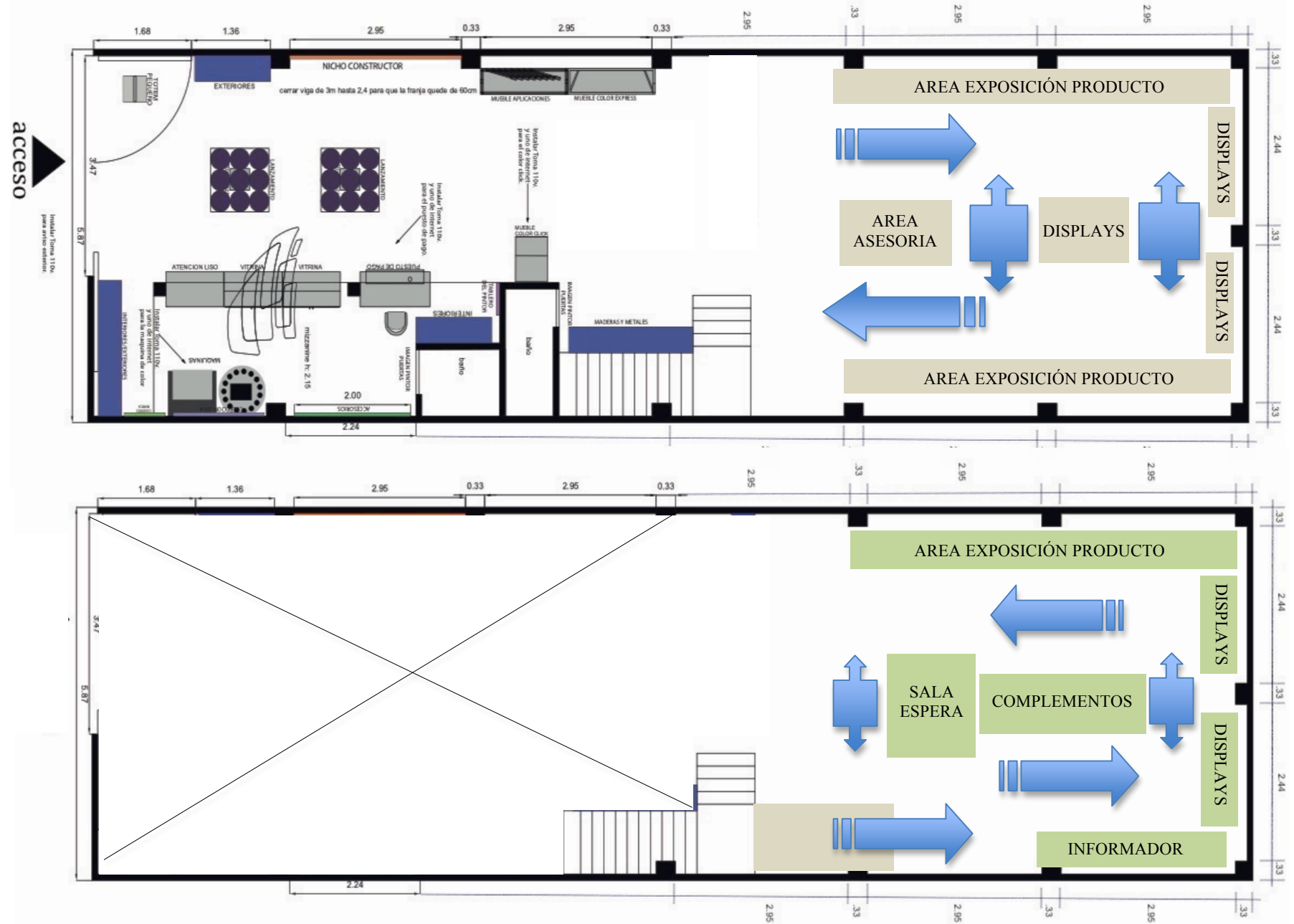




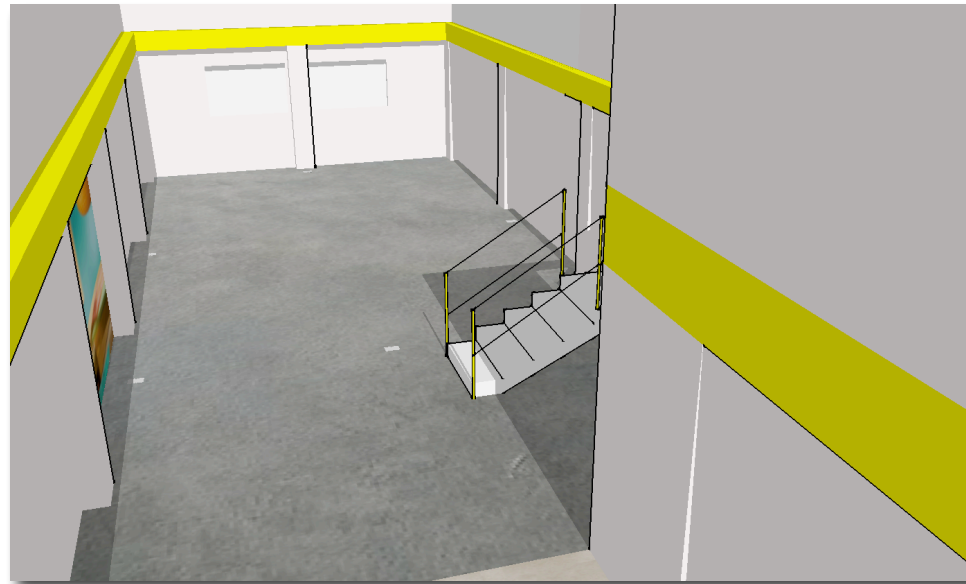
# ZONIFICACIÓN PRIMER Y SEGUNDO PISO



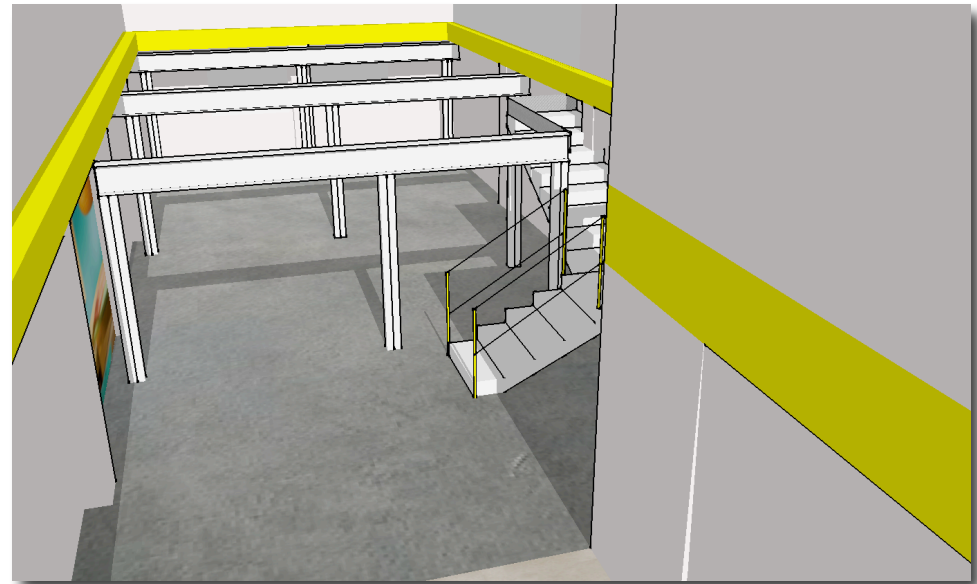
# PROPUESTA MEZANINE



AREA A INTERVENIR



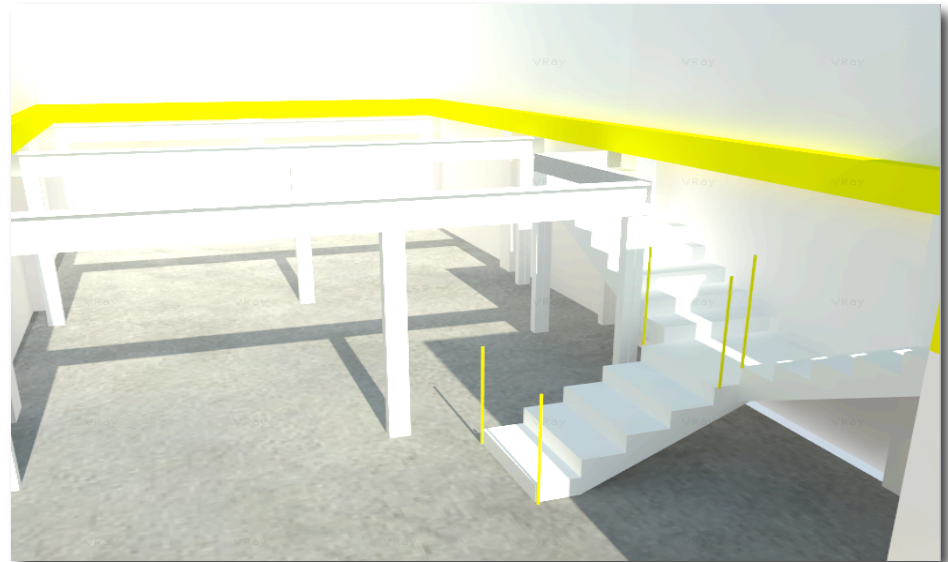
PROPUESTA ESTRUCTURA 1



PLANTEAMIENTO ESCALERAS



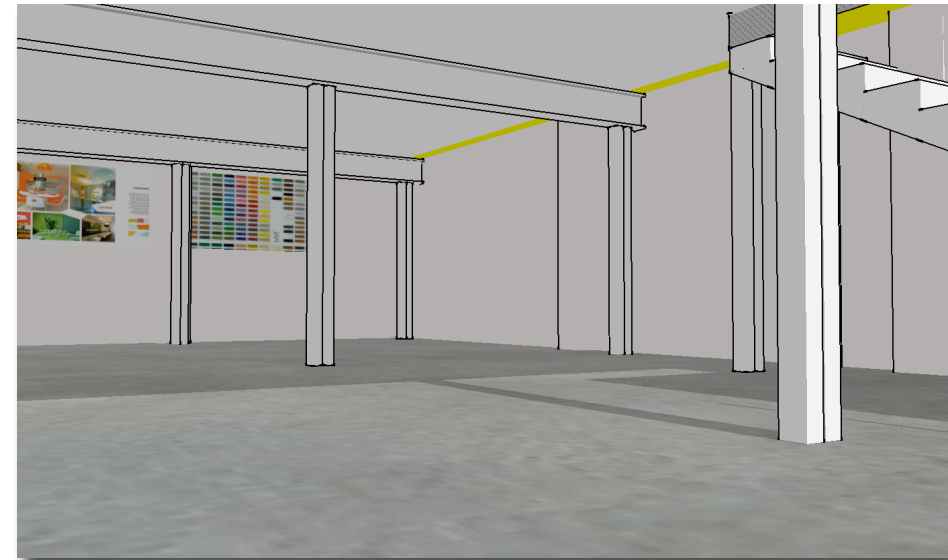
PLANTEAMIENTO ESCALERAS 1



PLANTEAMIENTO MEZANINE



PLANTEAMIENTO MEZANINE 2



PLANTEAMIENTO MEZANINE 3



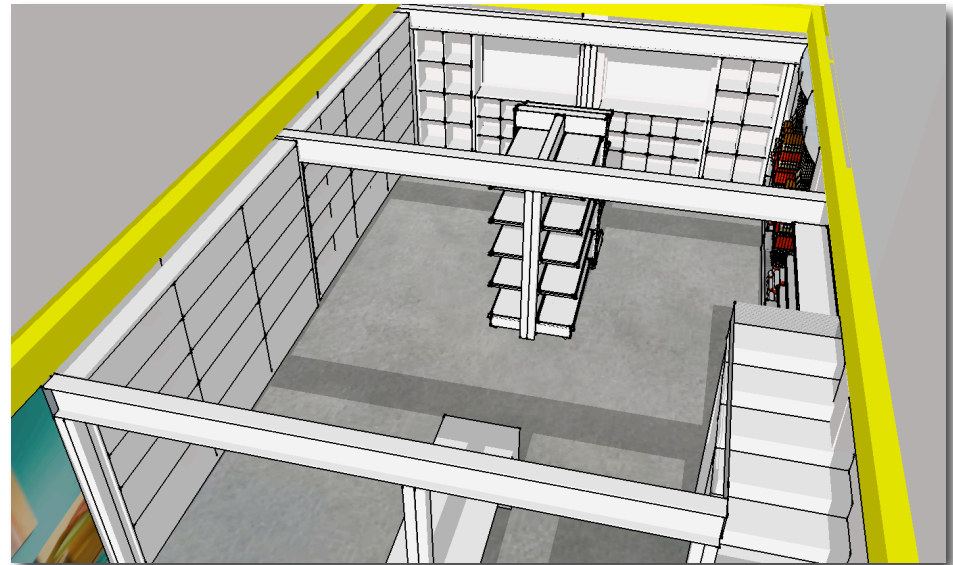
PLANTEAMIENTO MEZANINE 4



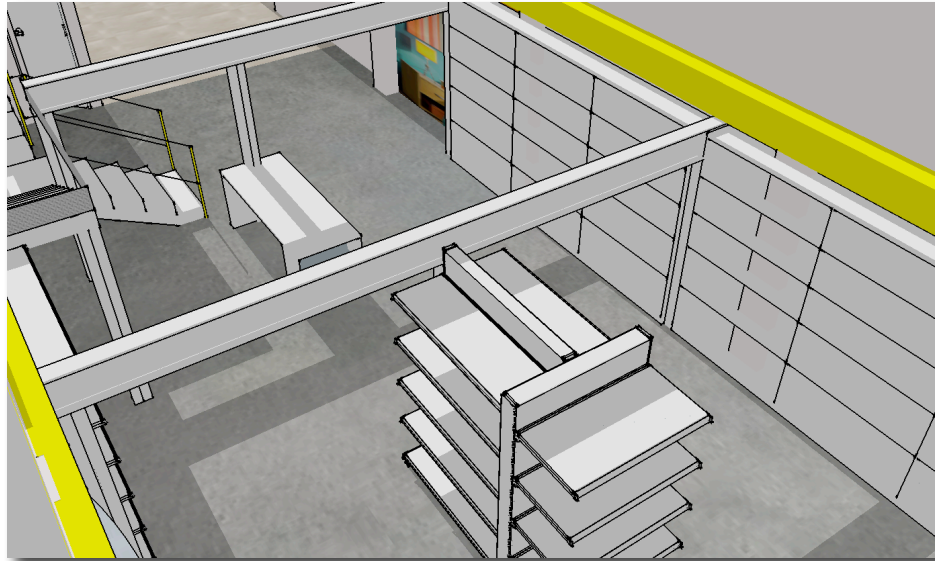
PLANTEAMIENTO MEZANINE 5



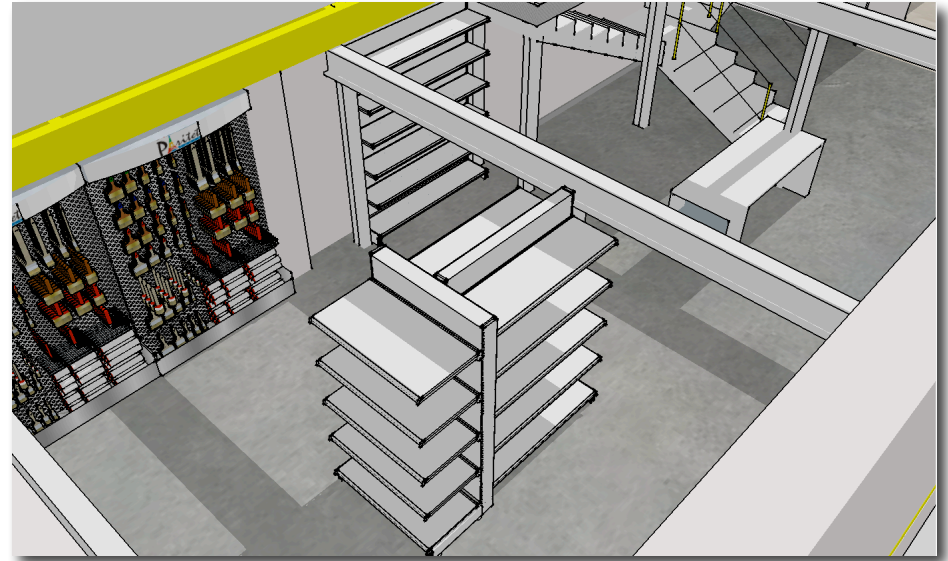
PLANTEAMIENTO MOBILIARIO



PLANTEAMIENTO MOBILIARIO 1



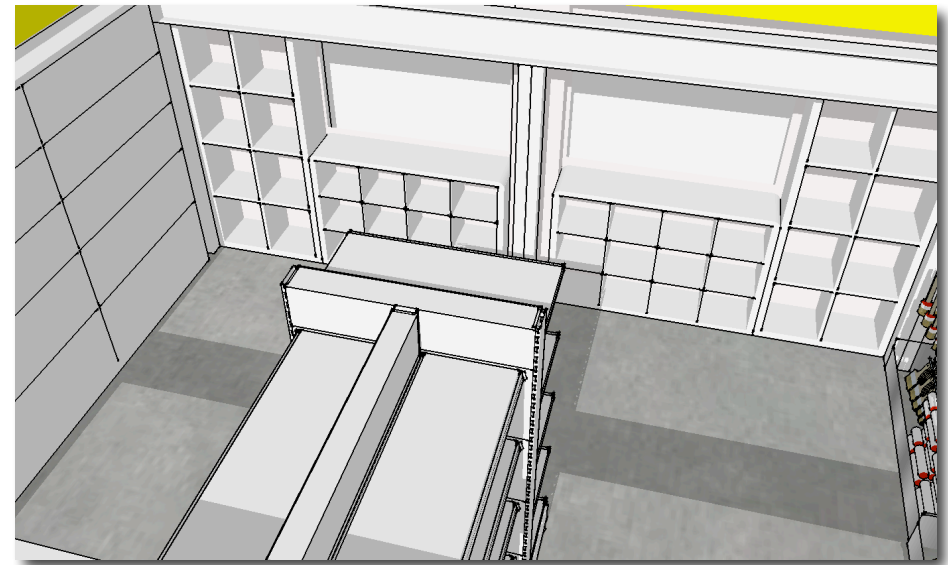
PLANTEAMIENTO MOBILIARIO 2



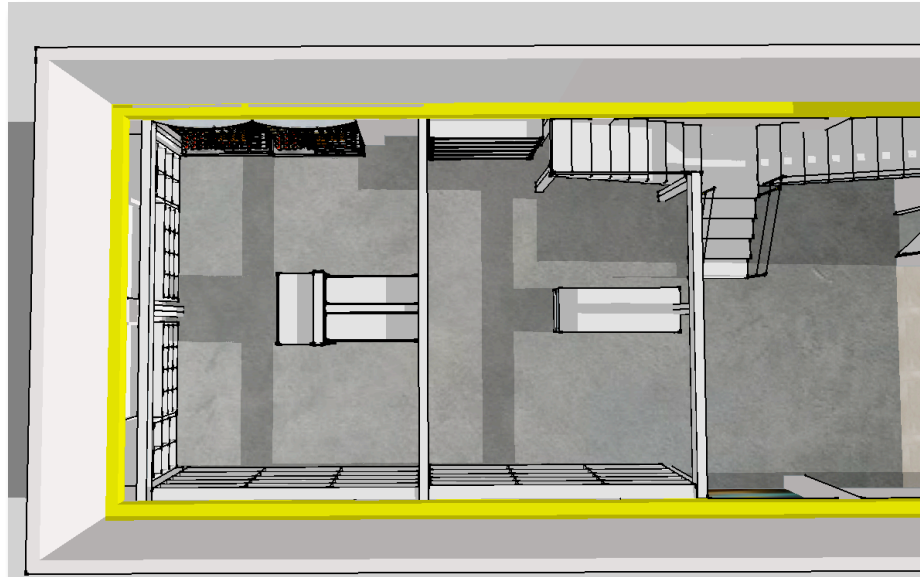
PLANTEAMIENTO MOBILIARIO 3



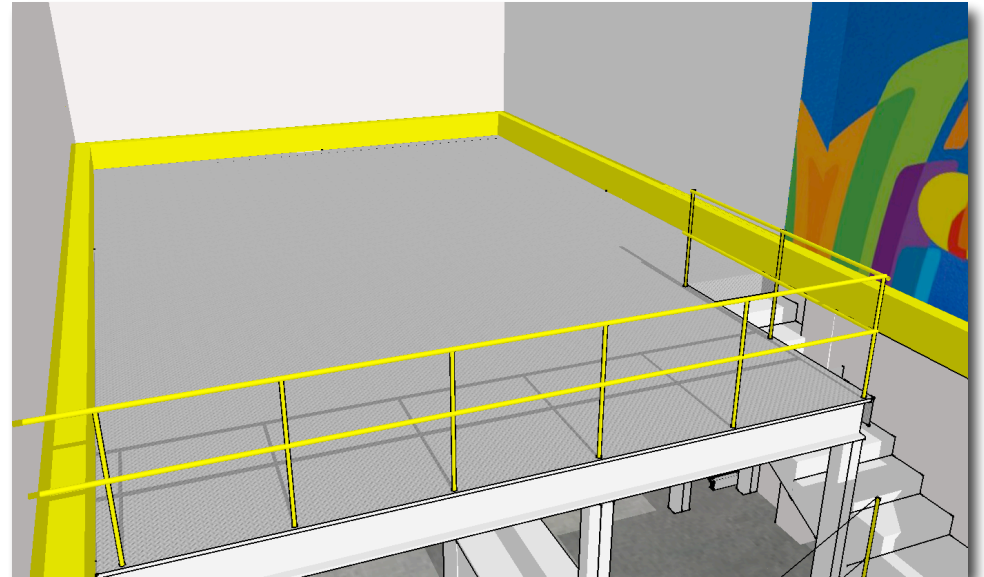
PLANTEAMIENTO MOBILIARIO 4



### DISTRIBUCIÓN MOBILIARIO PLANTA 1



### PLANTEAMIENTO MEZANINE 2DO NIVEL



### MOBILIARIO MEZANINE 2DO NIVEL



### MOBILIARIO MEZANINE 2DO NIVEL



MOBILIARIO MEZANINE 2DO NIVEL



VISTA GENERAL MEZANINE



DETALLE JARDIN INTERIOR

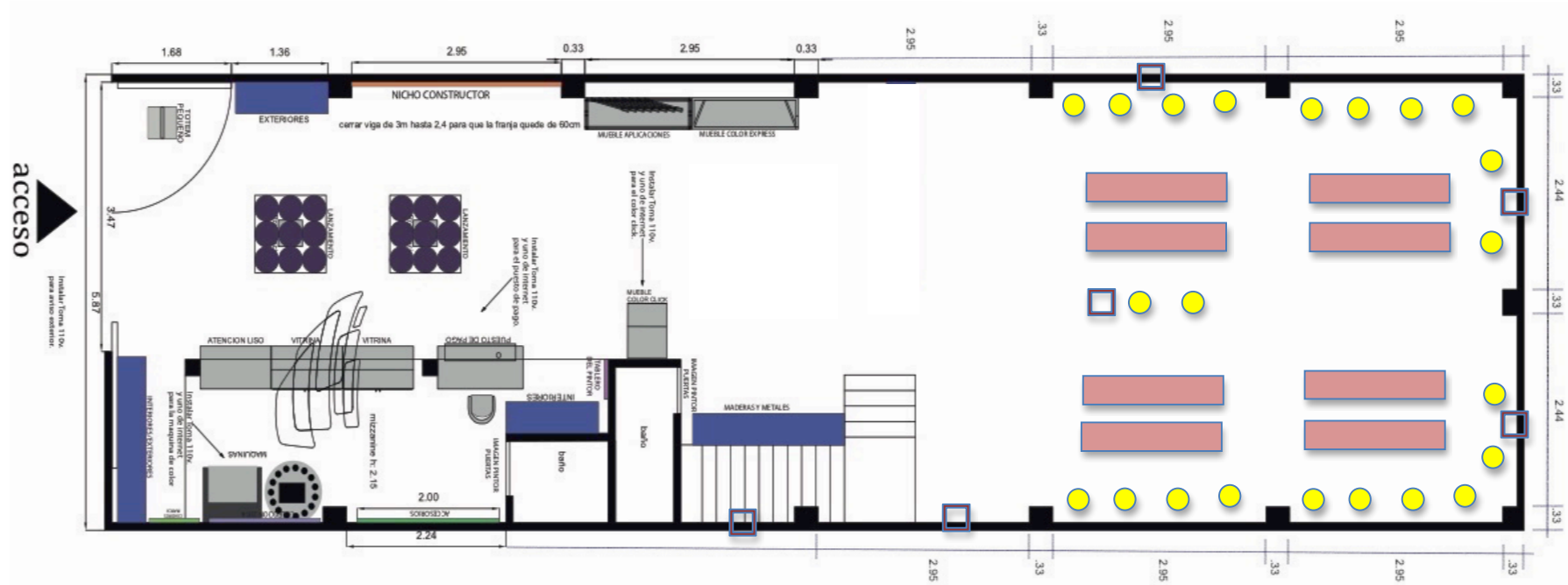


DETALLE JARDIN INTERIOR








# PLANTA LUMINARIAS PLANTA 1

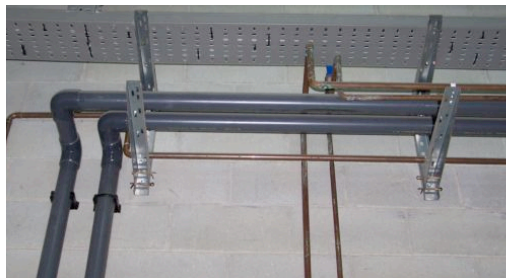


## CONVENCIONES

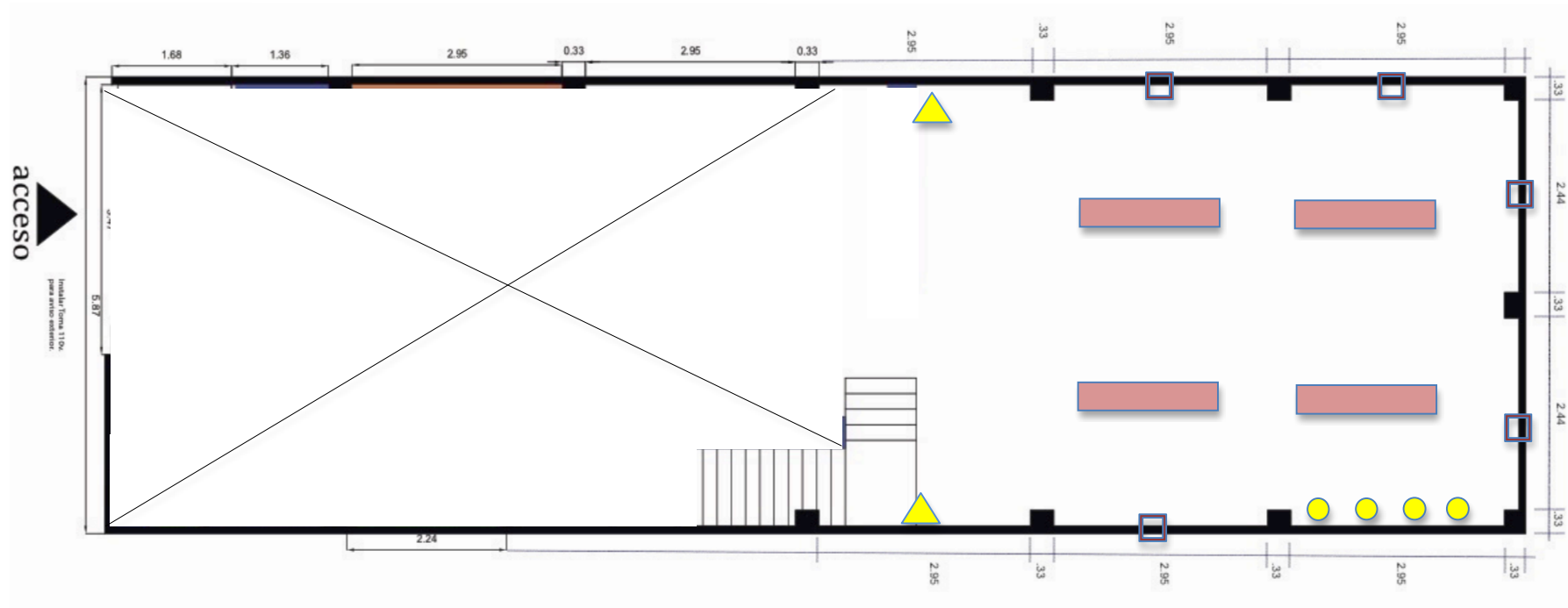
-  Toma de pared Doble
-  Luminaria halógena luz cálida ahorrador de energía.
-  Cajas iluminación fluorescente luz cálida. 150 x 20

## Nota:


Todas las acometidas eléctricas se plantearán exteriores con tubería galvanizada y amarres a la vista. Se sugiere dar color a las tuberías para dar un acabado más industrial.





## PLANTA LUMINARIAS MEZANINE




### CONVENCIONES

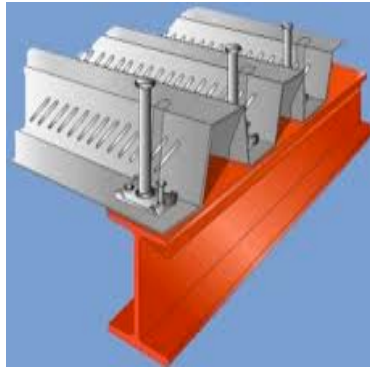
 Toma de pared Doble

 Luminaria halógena luz cálida ahorrador de energía.

 Cajas iluminación fluorescente luz cálida de colgar. 150 x 20

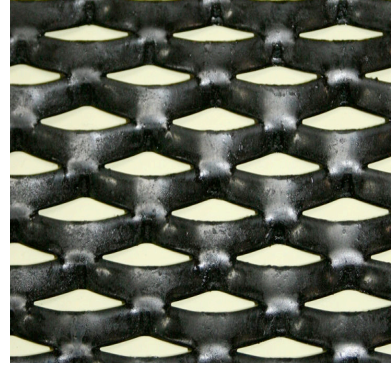
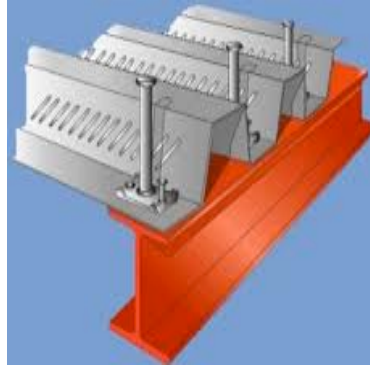
 Luces proyectantes reflectores iluminación fotografías de pared

## MATERIALES ESTRUCTURA MEZANINE



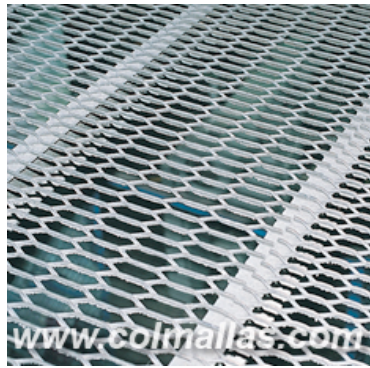
### PROPUESTA #1

- |   |                   |
|---|-------------------|
| - Estructura IPE                                      | Recuperada.       |
| - Vigas U Acero.                                      | Recuperada.       |
| - Láminas Metal deck.<br>.94 x 5.60 x .75mm           | <b>\$ 141.600</b> |
| - Suelo Lámina alfajor Calibre 6mm<br>1.0 x 3.0 x 6mm | <b>\$ 249.000</b> |
| 1.0 x 3.0 x 3mm                                       | <b>\$ 129.500</b> |



### PROPUESTA #2

- |   |                   |
|---|-------------------|
| - Estructura IPE                            | Recuperada.       |
| - Vigas U Acero.                            | Recuperada.       |
| - Láminas Metal deck.<br>.94 x 5.60 x .75mm | <b>\$ 141.600</b> |
| - Lámina HR Calibre 3mm<br>1.0 x 2.0 x 2mm  | <b>\$ 167.302</b> |



### PROPUESTA #3

- |  |                  |
|--|------------------|
| - Estructura IPE                               | Recuperada.      |
| - Vigas U Acero.                               | Recuperada.      |
| - Lámina Ref. Colmena 40-12<br>1.0 x 2.5 x 2mm | <b>\$ 72.355</b> |

**Nota: Correas cada 25-30cms para garantizar estabilidad lámina. Peso por M2 150Kg**

# MATERIALES ESTRUCTURA MEZANINE PROPUESTA 3

